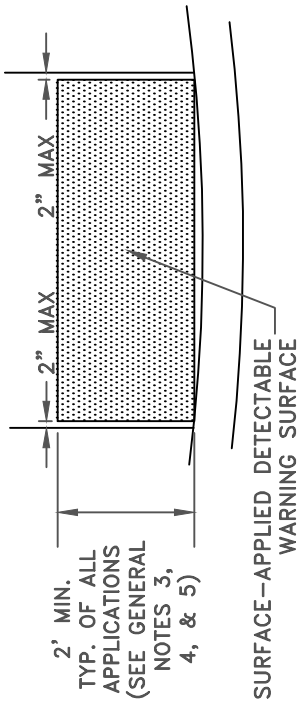
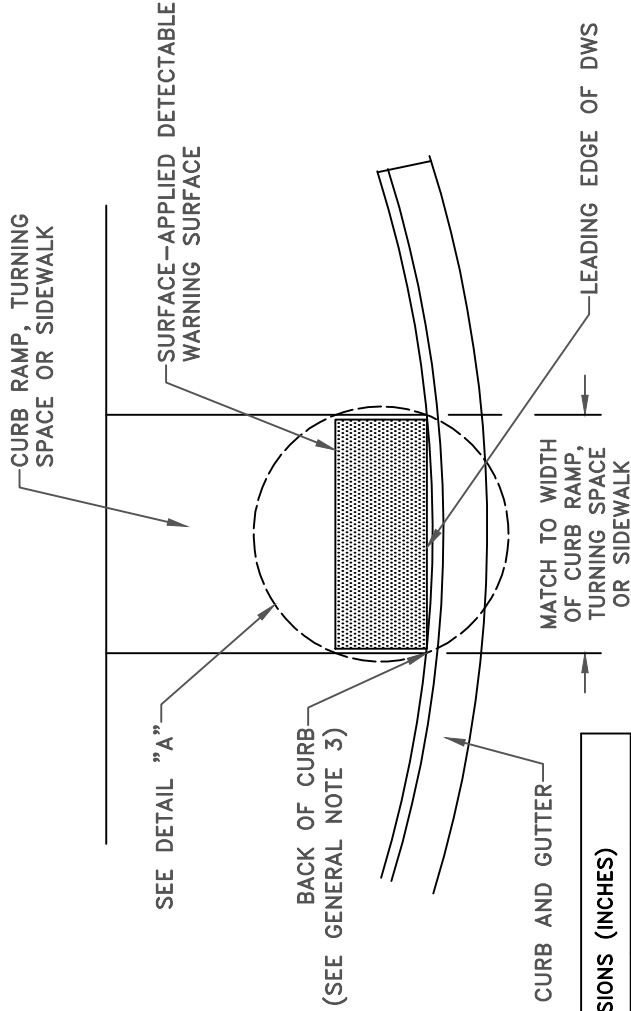


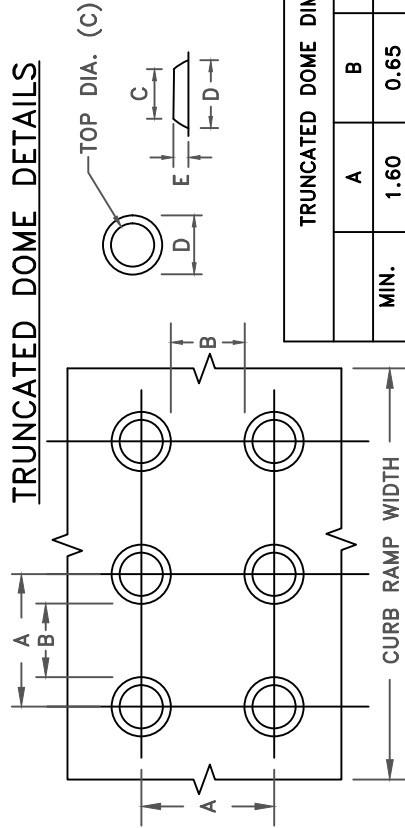
### DETAIL "A"



### DETECTABLE WARNING SURFACE DETAIL



### TRUNCATED DOME DETAILS



TRUNCATED DOME DIMENSIONS (INCHES)					
	A	B	C	D	E
MIN.	1.60	0.65	50% D	0.90	0.20
MAX.	2.40	-	65% D	1.40	0.20

### NOTES:

1. THE DETECTABLE WARNING SURFACE SHALL EXTEND THE FULL WIDTH OF THE CURB RAMP OPENING, SHARED PATH, BLENDED TRANSITION, TURNING SPACE, OR OTHER ROADWAY ENTRANCE AS APPLICABLE. A GAP OF UP TO 2 INCHES ON EACH SIDE OF THE DETECTABLE WARNING SURFACE IS PERMITTED.
2. DETECTABLE WARNING SURFACE SHALL BE PLACED AT THE BACK OF CURB FOR A MINIMUM DEPTH OF 2 FT. IN THE DIRECTION OF PEDESTRIAN TRAVEL AT CURB RAMPS THAT ARE ADJACENT TO TRAFFIC. DETECTABLE WARNING SURFACE MAY BE RADIAL OR RECTANGULAR, BUT MUST COMPLY WITH THE TRUNCATED DOME SIZE AND SPACING STANDARDS. DETECTABLE WARNING SURFACE MAY BE CUT TO MEET NECESSARY SHAPE AS SHOWN ON THE CONSTRUCTION DRAWINGS. THE DETECTABLE WARNING SURFACE SHALL NOT BE PLACED ACROSS A GRADE BREAK.
3. DETECTABLE WARNING SURFACE SHALL BE USED IN THE FOLLOWING LOCATIONS:
  - A). CURB RAMPS AT STREET CROSSINGS
  - B). PEDESTRIAN ISLANDS (ACCESSIBLE ROUTE ISLANDS)
  - C). RAILROAD CROSSINGS
4. WHERE NO CURB IS PRESENT, THE DETECTABLE WARNING SURFACE SHALL BE PLACED AT THE EDGE OF PAVEMENT.
5. DETECTABLE WARNING COLOR SHALL BE SAFETY YELLOW, EXCEPT IN DOWNTOWN ALBANY WHERE IT SHALL BE BLACK IN COLOR. ALTERNATIVE COLORS REQUIRE PRIOR APPROVAL OF THE CITY ENGINEER.

CITY OF ALBANY, OREGON  
PUBLIC WORKS DEPARTMENT

DETECTABLE WARNING SURFACE DETAIL

NO SCALE      JUNE 2023      NO. 319